

# Money Blues

Hans Reidel

♩=170

**A**

Musical notation for section A, measures 1-20. The piece is in 4/4 time with a key signature of one sharp (F#). The tempo is marked as quarter note = 170. The first measure starts with a forte (*f*) dynamic. The notation includes various rhythmic patterns such as eighth and sixteenth notes, and rests. The dynamic changes to mezzo-forte (*mf*) in the second measure. The section concludes with a double bar line at the end of measure 20.

**B**

Musical notation for section B, measures 21-38. This section begins with a forte (*f*) dynamic. The notation features a mix of eighth and sixteenth notes, with some measures containing rests. The key signature remains one sharp. The section ends with a double bar line at the end of measure 38.

**C**

Trompete  
**22**

**D**

Klarinette  
**12**

Musical notation for sections C and D, measures 39-42. This section consists of two measures of sustained notes. The first measure is for the Trompete (Trumpet) part, marked with a dynamic of **22**. The second measure is for the Klarinette (Clarinet) part, marked with a dynamic of **12**. Both parts are sustained throughout the two measures.

# Money Blues

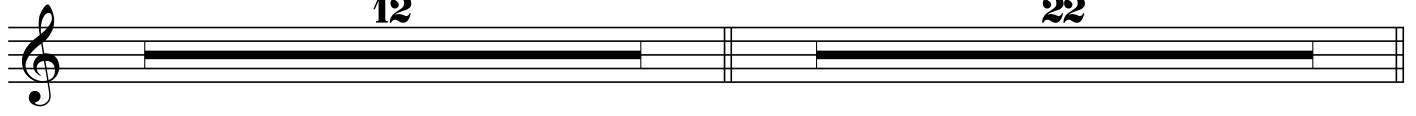
E

F

Tenor Solo

12

22



G



D7 G7 C B<sup>b</sup>7A7 D7 G7

