

# Blacking Blues

A LITTLE LOW-DOWN

07.03.23

Hans Reidel

**A**

F Bbm F Bbm F F7

6

Bb F F7 D

10

D7 D D7 G7 C7

17

F Bbm F Bbm F F7 Bb

23

A A7 Bb F° F F7 D+ D7

29

G7 C7 F

**B**

Soli

1/2 Trompete 1/2 Klavier

**C**

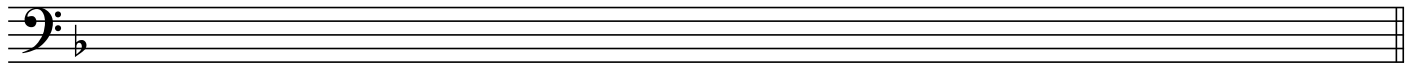
Verse

40

45

D

Soli



1/2 Klarinette 1/2 Posaune

E

